

Rural Municipality of Loon Lake No. 561

BYLAW No. 4/2015

A BYLAW TO AMEND BYLAW 1/2013 KNOWN AS THE OFFICIAL COMMUNITY PLAN

The Council of the Rural Municipality of Loon Lake No. 561 in the Province of Saskatchewan, enacts to amend Bylaw No.1/2013 as follows:

- 1. The Future Land Use Map which forms part of the Official Community Plan Bylaw 1/2013 shall be amended as follows:

By redesignating from CON – Conservation & Recreation District to LD2 – Medium Density Lakeshore Development District, the property located in SW ¼ 15-59-22 W3, as shown within the bold outlined area on the attached hereto and forms a part of this bylaw.

- 2. This bylaw shall come into force and take effect when approved by the Minister.




 REEVE


 ADMINISTRATOR

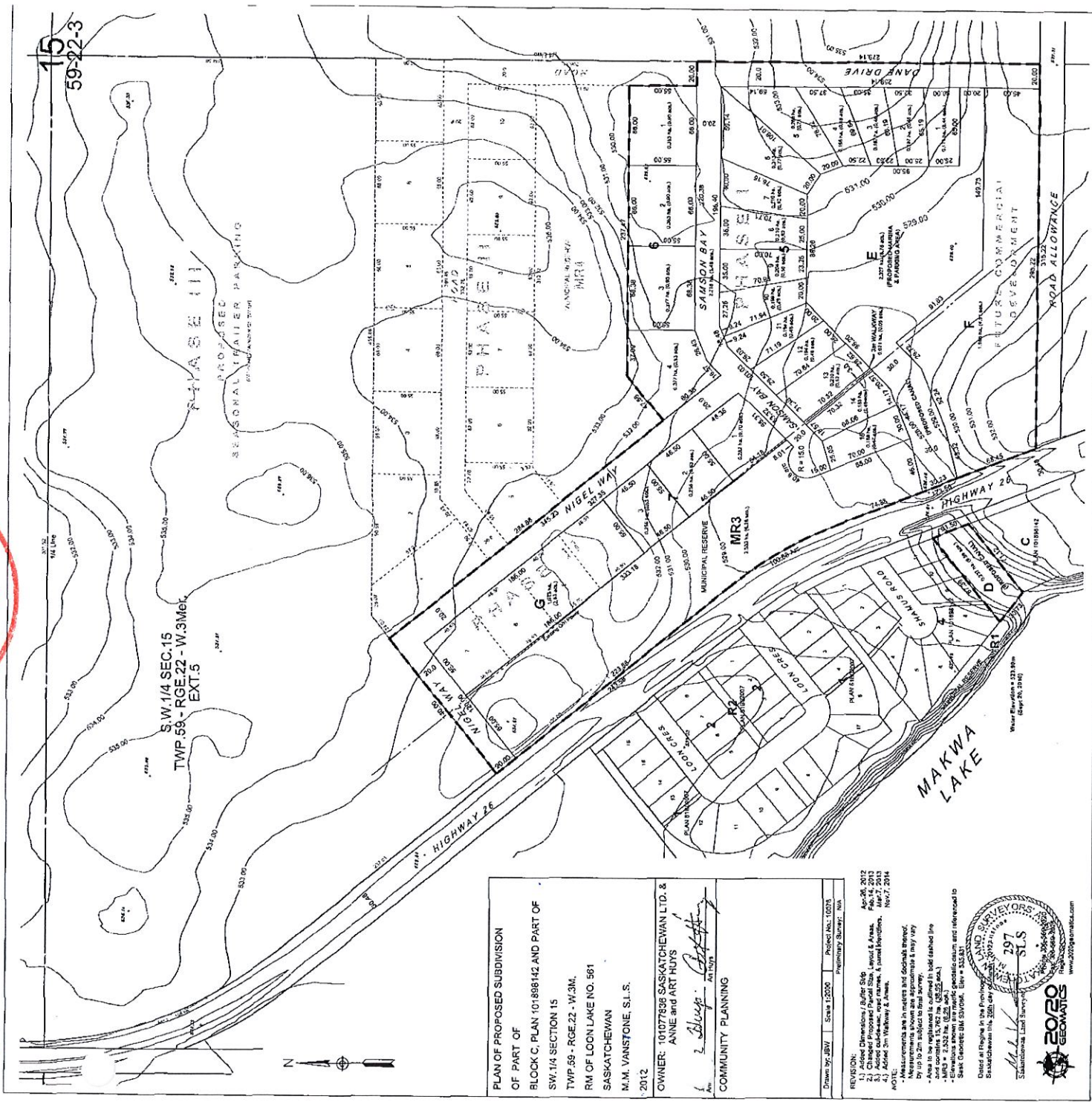
Read a first time on 10 day of June, 2015
 Read a second time on 12 day of August, 2015
 Read a third time on 12 day of August, 2015

**CERTIFIED TRUE COPY
 FROM THE
 R.M. OF LOON LAKE #561**
Laurie Schoup



This map forms part of Bylaw 4/2015.

Jamie Lehoucq,
Administrative



PLAN OF PROPOSED SUBDIVISION
 OF PART OF
 BLOCK C, PLAN 101898142 AND PART OF
 SW 1/4 SECTION 15
 TWP. 59 - RGE. 22 - W. 3M.
 RM. OF LOON LAKE NO. 561
 SASKATCHEWAN
 M.M. VANSTONE, S.I.S.,
 2012.
 OWNER: 101077898 SASKATCHEWAN LTD. &
 ANNE and ART HUTS
A. Lehoucq
 COMMUNITY PLANNING

Drawn by: BVM Scale 1:5000 Project No.: 10270
 Preliminary Survey: Yes
 REVISION:
 1) Correction of title block
 2) Check/Proposed Final Size, Layout & Areas, Feb. 14, 2013
 3) Assess cadastral, report names, & parcel boundaries, Mar. 7, 2013
 4) Update on Highway 2, Areas, Nov. 7, 2014
 NOTE:
 - Measurements are in meters and decimal fractions.
 - Measurements shown are approximates & may vary
 by up to 2m.
 - Area to be registered is outlined in bold dashed line
 and contains 15,782 sq. (3,855 ac.).
 - Elevations shown in metric, geoidic datum and refer to Wood
 Sisk Geomatics S.I.S. Elev. = 553.81
 Date of Check: In the Field by M.M. Vanstone, S.I.S. on
 Saskatchewan 1:50,000, on
 Saskatchewan, Land Survey
 Saskatchewan, Land Survey
 S.I.S.
 2020
 297
 www.2020sask.com

